

GOLD COUNTRY WOODCRAFTERS

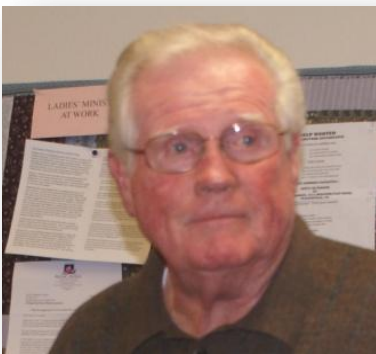
Newsletter May 2021

Vol 79

GCW Newsletter Brief:

For the May Zoom meeting the attendance had 16 joining. John Brideson opened the meeting with a report on restarting our monthly meetings with the possibility that we could start in June. He told us the Park Community Church where we have our meetings is now making their meeting room available for meetings. He suggested that the GCW Executive Committee meet soon to consider having starting our meeting in June. Homer Rail again hosted the meeting. Basil Borkert again managed the Show-N-Tell with 6 members showing their projects. For the May newsletter we have 8 members presenting their projects in the Show-N-Tell section. We have 1 member posting a message this month.

Presidents April 2021 Message:



Dear fellow CGW members.

Good news, the Pandemic nightmare is finally receding. The GCW Executive Committee has agreed that we will again conduct face to face meetings beginning June 8th 7pm. Again, our meeting place is Park Community Church Meeting Room located at 3901 Wild Chaparral Dr, Shingle Springs. We've been informed by the Park Community Church that CDC guidelines should be followed, but masks and social distancing will not be enforced.

Gold Country Woodcrafters has been meeting for 14 years, so it is not a "new beginning". We encourage all those who have an interest in woodworking to attend our meetings. I'm sure those of you who have been "sheltering in" for the past year, have projects and questions that they would like to share. Therefore, this first meeting will not have a guest speaker or demo. Bring a friend and welcome back to normalcy.

Warm Regards:

John Brideson

GOLD COUNTRY WOODCRAFTERS

Newsletter May 2021

Vol 79

First Post Pandemic In-Person Meeting in June:

The GCW Executive Committee met In-Person” and formally decided to restart our In-Person club meetings starting June 8th. It is expected that most attendees will have been vaccinated so wearing masks would be optional for them. For those that have not yet been vaccinated, masks are recommended. Park Community Church, where we meet, suggests that current CDC guidelines be followed. Attendees are expected to be on their honor and there will be no attempt at enforcement. We encourage all 2020 members and any guests to attend.

Club dues will not be due until July and will be \$10 for balance of 2021. Our new GCW year starts January 1 2022 as the club year is now based on the calendar year. New members will have dues prorated based on the month they join.

This first meeting will be a SUPER Show-N-Tell meeting, so bring those special projects created during this last year to share with our members. This should be a fun meeting as, I’m sure, we’ve all missed seeing friends what our fellow woodcrafters have been doing in the shop “live and In-Person”. It’s been way too long since we’ve seen each other so please be sure to pick up your badge at the door and wear it prominently. If you are like me this will be a “grand name refresher effort/event”.

Members Message Corner:

Gail Cone: I would like to wish Roy Carter a very happy birthday. This young man is a fresh 94 as of May 21. He is still going strong in his wood working hobby as we have witnessed by the Grand Totem poles he has created as of late. We look forward to seeing Roy at our upcoming “post pandemic” meeting in June.

GOLD COUNTRY WOODCRAFTERS

Newsletter May 2021

Vol 79

V-Show-N-Tell (8 Members):

Susan Settle



This first piece was a scrap (Cherry) donated by John Roberts, which I think resembles a teddy bear. Then there is the small clipboard. It fits a notepad that is 5x7" and is made with Mahogany, Wenge, Padauk, and Purple Heart. The houses, 2-3" each, are small leftover pieces donated by Basil Borkert. I thought they were perfect as either Christmas ornaments, or mini decorations. The woods are Purple Heart, Walnut, Maple, Cherry, and Padauk. All are finished with butcher block stuff. The wood-burned elephant and fox were done on Oak rounds by my daughter's fiancé. He's been wood burning since just before last Christmas. The elephant has magnets on the

back and is finished with Polyurethane. The fox will have a poly finish.

Susan



GOLD COUNTRY WOODCRAFTERS

Newsletter May 2021

Vol 79

Rich Schwerin



Good to see everyone at the zoom meeting and perhaps soon in "real life".

My current project is a small table with a Sapele top over maple legs and aprons. The

9x11 inch top was the largest I could salvage from the scrap pile.

The wood has several small fractures from a twisted grain. I applied epoxy to the fractures' bottom side and am using grain filler to smooth the

top. To assemble the project, I drilled a 7/32 hole in a small stick of maple to hold the drill bit, then using a ratcheting wrench I was able to drive the Kreg screws in very close quarters. This table was built as a Mother's Day gift. However, it may be Father's Day before it is "finished". Thanks again for keeping us together with the newsletter.

Best wishes *Rich*



GOLD COUNTRY WOODCRAFTERS

Newsletter May 2021

Vol 79

Homer Rail



Recently we had a house full with visiting family. To entertain the kids and their dads I pre-cut parts for four houses, one for each grandkid. Then while they visited with some help from their respective dads we assembled them. Fortunately everything worked well. The kids got to use some of Grandpa's tools and were able to spend some quality time with their dads and each had a birdhouse to take home to remember the trip by.

Homer



John Brideson



Birthday gift for best friend's 85th. Purple Heart, Maple segment w/name, dates, etc. sealed w/woodturners finish and super glue (medium).

Regards
John



GOLD COUNTRY WOODCRAFTERS

Newsletter May 2021

Vol 79

Basil Borkert



This segmented bowl project is composed of Maple, Walnut, Cherry, and Padauk (cross) with blue fish created using epoxy resin and blue micro powder. The fish pattern was created using a router. The finish is Danish oil and lacquer. It is 8" dia. and 7.5" tall.



Basil

Nick Pesola



Hope all is well. Just got my second shot and I am ready for a GCW meeting! Recently I was sorting slabs to resume some woodworking and came across a white fir one that barked at me. I always let the wood talk first then do what it wants. All it needed was to be sanded. I worked it down to 400 grit then applied Minwax paste finishing wax. It required a generous amount of elbow grease to get the job done. Quite a bit of time with the end-grain knots. The fun part was going through the different grades of sandpaper watching the grain pop. Now we have a Fido to hang on the wall.



Nick

GOLD COUNTRY WOODCRAFTERS

Newsletter May 2021

Vol 79

Micky Dupper



Here are my latest projects for the May newsletter. The first picture is that of a Niddy Noddy for my wife's spinning projects. It is used for winding the yarn to make skeins. It has Purple Heart ends



with a Maple handle. I finished it with clear lacquer. Top right is my first live edge bowl. Really interesting "turning air" in between the wings! I bought the blank at James Terrill's moving sale along with a handful of other different woods. I would like to thank James and wish him good luck with his move. I believe the wood is Cottonwood and it is finished with Bulls Eye clear shellac. At left is a Redwood Burl bowl finished with Bulls Eye clear shellac. I would like to thank you Roy Carter for the wood.

I hope to see everyone in person soon, Micky

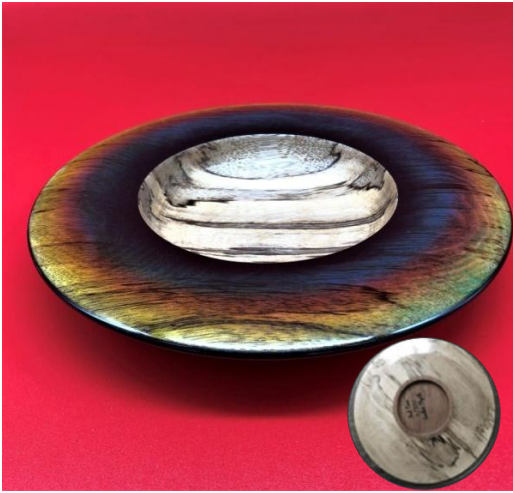


GOLD COUNTRY WOODCRAFTERS

Newsletter May 2021

Vol 79

Gail Cone



The turning top left is a rimmed bowl turned from a piece of 4/4 Spalted Myrtle wood, 1" h, 6 3/4 d". The bottom has a small piece of mortised Blood Wood for a base. The colored rim is shaded (sanded back) dyed areas of black, aqua green, magenta and yellow. The rim finish is many coats of spray lacquer, rubbed out to a fine finish. Note the color rim seen is the second try at getting what I wanted. I turned off the first try. The Bowl area and back side are finished using Danish Oil and Minwax Tung Oil Finish. I call this one Persian Eye.

The turning top right is turned from a 12" x 3.5" h piece of Liquid Amber. The dyes used on this one were black, magenta, and yellow. Again I used the sanding shading methods to get the desired effect. And yet again, this was the second try. The first try failed due to the finish (lacquer) and the dye combination was not what I wanted. The finish on this piece is CA. May coats of medium CA, sanded and polished. Note, CA changes the dye hue considerably. The magenta became dominant. Became a house favorite, but gave this one to a daughter-in law for her birthday.

Lastly, the turning bottom left is Purple Plum. Yep, there is a tree species Purple Plum. An arborist friend brought me a number of pieces. It was a bit punky and had numerous defects. Finished size is 2.25" x 10". It required lots of CA over the entire piece to stabilize the wood, both before and during turning (wiped out a 2oz bottle). The defects were filled using powdered turquoise set using CA. The finish is several coats of MinWax tung oil finish.

Photos with the red background were taken with the aid of a "light box". Got tired of running around looking for a place to take a decent photo of my work (lighting, background, etc) so I hunted down a photography light box on Amazon. It is 24"x24"x24", has several color backgrounds, configurable led lighting and folds down to 2.5"x24"x24".

See you soon. *Gail*



GOLD COUNTRY WOODCRAFTERS

Newsletter May 2021

Vol 79

Ron Sexton



Top left is a Compote bowl, wood is Blue Oak (?) that measures 4.5" H X 6" W. It is stained with Behlen Solar-Lux Hickory stain and then finished with 3 coats of semi-gloss lacquer and hand rubbed.

I was asked to do a Woodburn for someone who loves trees. The recipient is Autistic and they wanted his name burned on a piece of Pear wood. I decided to go a little further and did a tree for them. I too love trees and really enjoyed doing piece.

Ron



GOLD COUNTRY WOODCRAFTERS

Newsletter May 2021

Vol 79

Businesses that support GCW: Be sure to stop by Woodcraft Supply Sacramento, Pro Builder Placerville, The Paint Spot*, or the Rockler Woodworking* store in Rocklin. Please let them know how much Gold Country Woodcrafters appreciates their support. * ***Businesses offering GCW member discounts.***

Membership Dues:

Dues for the balance of 2021 will be due in July and are \$10. Our annual dues will be \$20 and will start in January of 2022. Please bring your dues to a GCW meeting.

Notice to members: If your contact information has changed since joining please let the club know. Just send any changes you may have to the email address used to send out the newsletter. Your cooperation is much appreciated.

Gold Country Woodcrafters Meeting Place: (When we can) GCW meetings are held the second Tuesday of each month unless otherwise notified and are at the Park Community Church meeting hall, 3901 Wild Chaparral Dr. Shingle Springs, Ca. exit 37 off highway 50. A map is provided on the home page of the GCW website.

Saw and Planer blade sharpening:

For members that need some blades sharpened GCW member Ken Welsh can handle the job. Just give him a call.

WELSH'S SAW WORKS

Formerly Rocklin Saw Works

Ken Welsh

Owner

3021 Crystal View Drive
El Dorado Hills, CA 95762
(Off Bass Lake Road)

Phone: (530) 677-4938

Cell: (916) 275-3388

Regards and happy woodcrafting.

Gail Cone

GCW Newsletter editor



I would like to acknowledge my Wife, Karen, for taking the time and effort to proof read the newsletter each and every month. Believe me it makes a real difference making me look good.

GCW Web site: goldcountrywoodcrafters.com

If you have any comments or suggestions please send them to me via an email. If you wish to unsubscribe so you no-longer receive GCW newsletters just send me a reply with the word "unsubscribe" in the subject.